

# GMS INTERNATIONAL FOODS INC.

## SoCal Location

16001 S. SAN PEDRO STREET # D  
GARDENA, CA. 90248  
P: 310-848-0577  
F: 310-868-2922

## NorCal Location

307 N UNION STREET  
STOCKTON, CA. 95205  
P: 209-229-8850

[gmsinternationalfoods@gmail.com](mailto:gmsinternationalfoods@gmail.com)

Mushtaq: 510-432-9593

Seema: 310-848-0577







INTERNATIONAL FOODS INC.

# Pakola®

PAKOLA CAN 250 ML  
CREAM SODA  
VIMTO CAN




PAKOLA BTL (1.5 LTR)  
CREAM SODA  
LYCHEE  
VIMTO




PAKOLA CREAM  
SYRUP 800ML

--



**FOR ORDER**  
**510-400-4540**



Mashal Foods  
gmsinternationalfoods@gmail.com





# Mashal Rice 4 X 10lb



10.75/  
Bag

11.25/ Bag  
Buy 30 Case+ 2 Cases  
Free



INTERNATIONAL FOODS INC.

510-400-4540

gms.internationalfoods@gmail.com



Description	Case	Qty	Description	Case	Qty
<b>BASMATI RICE</b>					
<b>MASHAL BASMATI RICE</b>					
					
MASHAL BASMATI 1121 RICE 2 LB	20 PKG		ZEBRA SELA ORANGE 10 LB	4 BAGS	
MASHAL BASMATI 1121 RICE 10 LB	4 PKG		ZEBRA SELA ORANGE 20 LB	2 BAGS	
MASHAL BASMATI 1121 SELA RICE 10 LB	4 BAGS		ZEBRA SELA ORANGE 40 LB	1 BAGS	
MASHAL BASMATI 1121 SELA RICE 20 LB	2 BAGS		ZEBRA SELA YELLOW 10 LB	4 BAGS	
			ZEBRA SELA YELLOW 20 LB	4 BAGS	
			ZEBRA SELA YELLOW 40 LB	1 BAGS	
			ZEBRA WHITE 4 LB	10 BAGS	
			ZEBRA WHITE 10 LB	4 BAGS	
			ZEBRA WHITE 20 LB	2 BAGS	
			ZEBRA WHITE 40 LB	1 BAG	
			<b>TEA SELECTION</b>		
ZAFRANI AGED RICE 10 LB	4 BAGS		AHMAD CEYLON TEA 500 GM STD 82	24 BOX	
RESERVE RICE 10 LB	4 BAGS		AHMAD CEYLON TEA AROMATIC 500GM	12 CAN	
			AHMAD CEYLON TEA W/ CARDAMOM 500GM	12 CAN	
			AHMAD CEYLON TEA W/ EARGREY PRD-957	12 CAN	
			AHMAD DARJELING TEA 200 GM	12 CAN	
			AHMAD EARL GREY TEA BAG 100T/B	12 BOX	
			AHMAD ENGLISH BREAFAST TEA # 1 100T/B	12 BOX	
			AHMAD GREEN TEA GUN POW 500gm	12 BOX	
			AHMAD TEA GREEN 250gm	12 BOX	
					
AHUBARA SELA RICE 10 LB	4 BAGS		AMBER TEA BLEND (BLACK) 250 GM	36 PACK	
AHUBARA SELA RICE 20 LB	2 BAGS		AMBER TEA EARL GREY (RED) 250GM	36 PACK	
AHUBARA SELA RICE 40 LB	1 BAG		AMBER TEA GREEN 250GM	36 PACK	
BAGHLAN SELA RICE 10 LB	4 BAGS		MASHAL GREEN TEA 350 GM (JAR)	12 JARS	
BAGHLAN SELA RICE 40 LB	1 BAG		SADAF TEA BLEND 100 TB	12 BOX	
MOTHER SELA RICE 10 LB	4 BAGS		SADAF TEA BLEND 16 OZ	24 BOX	
MOTHER SELA RICE 20 LB	2 BAG		SADAF TEA BLEND 50 TB	24 BOX	
MOTHER SELA RICE 40 LB	1 BAG		SADAF TEA BLEND W CARDAMOM 100 TB	12 BOX	
			SADAF TEA BLEND W CARDAMOM 16 OZ	12 BOX	
			SADAF TEA BLEND W CARDAMOM 50 TB	24 BOX	

Description	Case	Qty	Description	Case	Qty
					
					

<b>TAPAL GREEN TEA</b>					
DANEDAR TEA 900 GM POUCH	12 PKT		JASMINE GREEN TEA JAR 100 GM	40 JARS	
DANEDAR TEA 450 GM JAR	30 JARS		LEMON GRASS GREEN TEA JAR 100 GM	40 JARS	
DANEDAR TEABAGS 100 +25 FREE	20 PKTS		JASMINE GREEN TEABAG 45 GM	40 BOX	
DANEDAR TEABAGS 100 T/B	20 PKTS		LEMON GRASS GREEN TEABAG 45 GM	40 BOX	
DANEDAR ROUND BAGS 220 T/B	6 BOX		CARDAMOM GREEN TEABAG 45 GM	40 BOX	
DANEDAR ROUND BAGS 300 T/B	6 PUCH		MINT GREEN TEABAG 45 GM	40 BOX	
TAPAL 3IN1 INSTANT CARDMOM 200 GM	BX-12		SOG GREEN TEABAG 45 GM	40 BOX	
FAMILY MIXTURE TEA 900 GM	12 PKTS		APPLE CINNAMON TEABAG 45 GM	40 BOX	
FAMILY MIXTURE TEA 450 GM JAR	30 JARS		TROPICAL PEACH GREEN TEABAG 45 GM	40 BOX	
			GULBAHAR TEA SACHET 5 X 90 GM	12 BOX	



<b>PRAN JUICES</b>			<b>PRAN MR. NOODLES (HALAL)</b>		
			MR CUP NOODLE BEEF 60 GM	BX-48	
GUAVA 1 LITER (PET BOTTLE)	12 BTLs		MR CUP NOODLE CHICKEN 60 GM	BX-48	
LYCCHIE 1 LITER (PET BOTTLE)	12 BTLs		MR CUP NOODLE CHICKEN CURRY 60 GM	BX-24	
MANGO 1 LITER (PET BOTTLE)	12 BTLs		MR CUP NOODLE VEGE 60 GM	BX-48	
MANGO 500 ML (PET BOTTLE)	24 BTLs		MR NOODLE BEEF 70 GM	BX-60	
MANGO JUICE 250ML (TETRA PACK)	24 PACK		MR NOODLE BEEF 70 GM	BX-60	
MANGO JUICE 260ML (PET BOTTLE)	48 BTLs		MR NOODLE CHICKEN 70 GM	BX-60	
			MR NOODLE CURRY 70 GM	BX-60	
			MR NOODLE VEGE. 70 GM	BX-60	
			MR NOODLES SPICY TOMATO 70 GM	BX-60	
			MR STICK CHICKEN NOODLE 180 GM	BX-24	

<b>PRAN MUSTARD OIL (For External Use Only)</b>		
MUSTARD OIL 250 ML	24 BTLs	
MUSTARD OIL 500 ML	24 BTLs	
MUSTARD OIL 1 LITER	12 BTLs	



Description		Case	Qty	Description		Case	Qty
							
							
<b>PRAN SNACKS</b>							
SNACKERS ZEERO'S 35 GM		BX-100		<b>PRAN BAKERY TOAST</b>			
CHANACHOR CURRY LEAVES 300GM		BX-24		FRESH RUSK WITH CUMIN & FENNEL 350 GM	BX-12		
CHANACHOR "HOT" 300GM		BX-24		RUSK KIT 14 OZ (400GM)	BX-12		
CHANACHOR "NORMAL" 300GM		BX-24		TOAST SOFT 350 GM	BX-12		
CHEERA MIX 150 GM		BX-24		TOAST SPECIAL 350GM	BX-12		
JHAL MURI "WASABI" 150 GM (PKG)		BX-28		TOAST SWEET BISCUIT 350GM	BX-12		
CHANACHOR "BBQ" 150 GM (PKG)		BX-48					
SNACKERS FRIED PEAS 150GM		BX-48					
SNACKERS MUNG DAL 150GM		BX-48					
SNACKERS POTATO CRACKER 60 GM		BX-60					
SNACKERS TOM TOM CRACKER 60 GM		BX-60					
				<b>COOKIES &amp; WAFERS</b>			
				CREAMY CRANCY MAMA WAFER 120 GM	BX-36		
				CRUNCHY WAFER CHOCO. 150 GM	BX-24		
				CRUNCHY WAFER ORANGE 150 GM	BX-24		
<b>PRAN CHUTNEY &amp; SAUCES</b>				CRUNCHY WAFER STRAWBERRY 150 GM	BX-24		
BOROI CHUTNEY 300 GM		BX-12		<b>DRY CAKE BISCUIT 400GM (CAKE RUSK)</b>	BX-12		
CHUTNEY MANGO 300 GM		BX-12		ELAICHI BISCUITS 95GM	BX-24		
SAUCE KASUNDI 300 GM		BX-12		GLUCOSE BISCUITS 95GM	BX-24		
		BX-12		MALT & MILK BISCUIT 10 X 35 GM	BX-12		
				NICE BISCUIT 10 X 35 GM	BX-12		
				ORANGE CREAM 90 GM	BX-36		
				SALTY BISCUITS 65 GM	BX-36		
				<b>SUGAR FREE BISCUIT</b>	<b>BX-12</b>		
				<b>PRAN RICE</b>			
				CHUNI GURA RICE 11 LB (5KG)	BX-3		
				CHUNI GURA RICE 2.2 LB (1KG)	BX-12		
				KALIJEERA RICE 11 LB (5KG)	BX-3		
				KALIJEERA RICE 2.2 LB (1KG)	BX-12		
				KALIJEERA RICE 20 LB	BX-2		
				KALIJEERA RICE 4.4 LB (2KG)	BX-6		
				POHA (FLATTENED) REDDISH RICE 1KG	BX-3		
				POHA (FLATTENED) WHITE RICE 1KG	BX-3		
				<b>PUFFED RICE 500 GM (BAG)</b>	<b>BX-10</b>		



Description	Case	Qty	Description	Case	Qty
<b>PRAN SPICES</b>			<b>PRAN PICKLES</b>		
			BOROI SWEET PICKLE 350 GM	BX-12	
			CHALTA PICKLE 400 GM	BX-12	
			CHILI PICKLE 400 GM	BX-12	
			GARLIC PICKLE 400 GM	BX-12	
			MANGO PICKLE 1KG	BX-12	
			MANGO PICKLE 400 GM	BX-12	
			MANGO PICKLE HOT 400 GM	BX-12	
			MIXED PICKLE 1KG	BX-12	
			MIXED PICKLE 400 GM	BX-12	
			OLIVE PICKLE 1 KG	BX-12	
BAY LEAVES 100 GM	BX-40		OLIVE PICKLE 400 GM	BX-12	
BIRIYANI MIX 500 GM	BX-12		OLIVE PICKLE HOT 400 GM	BX-12	
CHATPATI MIX MASALA 60 GM	BX-24		CHILI HOT PICKLE (NAGA) 200 GM	BX-24	
CHICKEN CURRY MASALA 100 GM	BX-24				
CHICKEN ROAST MASALA 100 GM	BX-24		<b>PRAN CANDY</b>		
FISH MIX MASALA 100 GM	BX-24		PEANUT BAR 30 GM	BX-288	
GARAM MASALA 100 GM	BX-24		MANGO BAR 14 GM	BX-360	
HALEEM MASALA 200 GM	BX-24		MANGO BAR HOT 14 GM	BX-360	
MEAT MASALA 100 GM	BX-24				
SHAMI KABAB MASALA 50 GM	BX-24				
					
					
					
			<b>PRAN SEMAI</b>		
			PRAN LACHA PHENNY 200 GM	BX-24	
			PRAN LACHA SEMIA 200 GM	BX-24	
			PRAN VERMICELLI 150 GM	BX-24	
			<b>PRAN MISC.</b>		
			PRAN ROSE WATER 300 ML	BX-24	
			PRAN VINEGAR 600ML	BX-12	
					
					
					

**AHMED PRODUCTS**

Description	Case	Qty	Description	Case	Qty
			<b>CUSTARDS</b>		
			BANANA CUSTARD POWDER 300 GM	8 BOX	
			MANGO CUSTARD POWDER 300 GM	8 BOX	
			MIX FRUIT CUSTARD POWDER 300 GM	8 BOX	
			STRAWBERRY CUSTARD POWDER 300 GM	8 BOX	
			VANILLA CUSTARD POWDER 300 GM	8 BOX	
			<b>CORN FLOUR 300 GM</b>	<b>8 BOX</b>	
<b>PICKLE 1 KG</b>					
CHILI PICKLE 1 KG	DOZEN		LIME PICKLE 1 KG	DOZEN	
GARLIC PICKLE 1 KG	DOZEN		MANGO REG. PICKLE 1 KG	DOZEN	
HYD. MANGO PICKLE 1 KG	DOZEN		MIX REG. PICKLE 1 KG	DOZEN	
HYD. MIX PICKLE 1 KG	DOZEN				
			<b>JAMS</b>		
<b>PICKLES IN GLASS BOTTLE</b>			APPLE JAM 400 GM	12 JARS	
			MANGO JAM 400 GM	12 JARS	
			MIXED FRUIT JAM 400 GM	12 JARS	
			ORANGE MARMALADE 400 GM	12 JARS	
			PINEAPPLE JAM 400 GM	12 JARS	
			RASPBERRY JAM 400 GM	12 JARS	
			STRAWBERRY JAM 400 GM	12 JARS	
					
CHILI PICKLE 320 GM	12 JARS		<b>CRYSTAL JELLIES (VEGE)</b>		
GARLIC PICKLE 330 GM	12 JARS				
HYD. LIME & CHILI PICKLE 330 GM	12 JARS				
HYD. LIME PICKLE 330 GM	12 JARS				
HYD. MANGO PICKLE 330 GM	12 JARS				
HYD. MIX PICKLE 330 GM	12 JARS				
KASONDI PICKLE 330 GM	12 JARS		APPLE JELLY 80 GM	DOZEN	
MANGO REGURAL PICKLE 330 GM	12 JARS		<b>OTHER POPULAR</b>		
MIX REGURAL PICKLE 330 GM	12 JARS		BANANA JELLY 80 GM	DOZEN	
			BLACK CURRENT JELLY 80 GM	DOZEN	
FRIED VERMICELLI (PHENNY) 200 GM	24 PKG		BLUEBERRY JELLY 80 GM	DOZEN	
<b>KEWRA WATER 250 ML</b>	<b>12 BTLs</b>		CHERRY JELLY 80 GM	DOZEN	
MURABA AMLA 400 GM	12 BTLs		LYCHEE JELLY 80 GM	DOZEN	
MURABA CARROT 400 GM	12 BTLs		MANGO JELLY 80 GM	DOZEN	
MURABA HURDA 400 GM	12 BTLs		MIXED FRUIT JELLY 80 GM	DOZEN	
MURABA ROSE PERTAL (GULQAND) 400 GM	12 BTLs		ORANGE JELLY 80 GM	DOZEN	
MURABA ROSE PERTAL ( <b>GULQAND</b> ) 1 KG	6 JARS		PEACH JELLY 80 GM	DOZEN	
<b>ROASTED VERMICELLI 150 GM (7 + 1 FREE)</b>	<b>60 PKG</b>		PINEAPPLE JELLY 80 GM	DOZEN	
<b>ROSE WATER 250 ML</b>	<b>12 BTLs</b>		RASPBERRY JELLY 80 GM	DOZEN	
WHITE VINEGAR SYNTHETIC 800 ML	12 BTLs		STRAWBERRY JELLY 80 GM	DOZEN	
SARSON KA SAAG 800 GM	12 BTLs		CREAM CARAMEL 85 GM	DOZEN	



**AHMED PRODUCTS**

Description	Case	Qty	Description	Case	Qty
<b>PLAIN SPICES</b>			<b>CHUTNEYS AND SAUCES</b>		
ANARDANA WHOLE 100 GM	12 PKG				
ANARDANA POWDER 100 GM	12 PKG				
CURRY POWDER 200 GM	12 PKG				
CURRY POWDER 400 GM	12 PKG				
MEAT TENDERIZER 50 GM	DOZEN		CHILI GARLIC SAUCE 300 ML	12 BTLS	
			GREEN CHILI SAUCE 300 ML	12 BTLS	
			MANGO CHUTNEY HOT 400 GM	12 BTLS	
			MANGO CHUTNEY MILD 400 GM	12 BTLS	
			PLUM CHUNEY 400 GM	12 BTLS	
			CHILI GARLIC SAUCE 800 ML	12 BTLS	
			GREEN CHILI SAUCE 800 ML	12 BTLS	
			TAMRIND CHUTNEY 800 GM	12 BTLS	
<b>RECIPE SPICES</b>					
ACHAR GHOST MASALA 50 GM	12 BOX		PAYA MASALA 50 GM	12 BOX	
BIHARI KABAB 50 GM	12 BOX		PULLAO BIRYANI MASALA 75 GM	12 BOX	
BIRYANI MASALA 50 GM	12 BOX		QEEMA MASALA 50 GM	12 BOX	
BOMBAY BIRYANI MASALA 60 GM	12 BOX				
CHAAT MASALA 50 GM	12 BOX				
CHANNA MASALA 50 GM	12 BOX				
CHAPLI KABAB MASALA 50 GM	12 BOX		QORMA MASALA 50 GM	12 BOX	
CHICKEN BIRYANI 50 GM	12 BOX		SABZI (VEGE) MASALA 50 GM	12 BOX	
CHICKEN BROAST 100 GM	12 BOX		SEEKH KABAB MASALA 50 GM	12 BOX	
CHICKEN JALFREZ1 50 GM	12 BOX		SHAHI DAL MASALA	12 BOX	
CHICKEN JALFREZ1 50 GM	12 BOX		SHAMI KABAB 50 GM	12 BOX	
CHICKEN MASALA 50 GM	12 BOX		SINDHI BIRYANI MASALA 60 GM	12 BOX	
DAHI BARA CHAAT 50 GM	12 BOX		TANDOORI CHICKEN MASALA 50 GM	12 BOX	
FISH CURRY MASALA 50 GM	12 BOX		TIKKA BOTI BBQ MASALA 50 GM	12 BOX	
FRUIT CHAAT MASALA 50 GM	12 BOX		YAKHNI PULLAO MASALA 50 GM	12 BOX	
FRY FISH MASALA 50 GM	12 BOX		<b>SQUASH AND SYSRUP</b>		
KARACHI / BALTI GHOST 50 GM	12 BOX		MANGO SQUASH 800 ML	12 BTLS	
KARAH1 GHOST 50 GM	12 BOX		ORANGE SQUASH 800 ML	12 BTLS	
KOFTA MASALA 50 GM	12 BOX		ICE CREAM SYSRUP 800 ML	12 BTLS	
MUTTON BIRYANI 50 GM	12 BOX		<b>KHEER MIX</b>		
NIHARI MASALA 50 GM	12 BOX		KEWRA (CARDAMOM) KHEER MIX 170 GM	12 PKG	
PASSANDA MASALA 50 GM	12 BOX		PISTACHIO KHEER MIX 170 GM	12 PKG	
<b>READY MIXES</b>			COCONUT KHEER MIX 170 GM	12 PKG	
HALEEM MIX 375 GM	12 BOX		PLAIN KHEER MIX 170 GM	12 PKG	
PAKORA MIX 100 GM	12 BOX		SAFFRON KHEER MIX 170 GM	12 PKG	
<b>PASTES</b>			SHEER KHURMA MIX 170 GM	12 PKG	
BIRYANI PASTE 330 GM	12 JARS				
KABAB PASTE 330 GM	12 JARS				
CURRY PASTE 330 GM	12 JARS				
TANDOORI PASTE 330 GM	12 JARS				
GINGER PASTE 700 GM	12 JARS				
GARLIC PASTE 700 GM	12 JARS				
GARLIC GINGER PASTE 700 GM	12 JARS				



Description	Case	Qty	Description	Case	Qty
			<b>Frozen Sweet</b>		
<b>Dry Snacks</b>					
BAREEK SEV 200 GM	BX-16		AKHROT HALWA 1LB	BX-12	
BOONDI 200 GM	BX-16		ALMOND BURFI 1LB	BX-12	
DAL MOONG 200 GM	BX-16		ALMOND/BADAM HALWA 1LB	BX-12	
DAL MOTH 200 GM	BX-16		ASSORTED BURFI 1LB	BX-12	
DAL SEV 200 GM	BX-16		ASSORTED CHUM CHUM 1LB	BX-12	
GAATHIA 180 GM	BX-16		ASSORTED HALWA 1LB	BX-12	
MASALA PAPDI 150 GM	BX-16		ASSORTED MIX (SHAHI MIX) 1LB	BX-12	
MEETHA CHEWRA 200 GM	BX-16		ASSORTED SWEET ROLL 1LB	BX-12	
MIX NIMCO 200 GM	BX-16		BESAN LADDU 1LB	BX-12	
NAMKEEN CHEWRA 200 GM	BX-16		BURFI 1LB	BX-12	
<b>Dry Bakery Product</b>			BURFI 2LB		
ALMOND COOKIES 200GM	BX-12		CASHEW/KAJU HALWA 1LB	BX-12	
ALMOND CHOCO COOKIES 200GM	BX-12		CHUM CHUM BROWN 1LB	BX-12	
CHECKER COOKIES 200GM	BX-12		CHUM CHUM WHITE 1LB	BX-12	
CUMIN COOKIES 200GM	BX-12		COCONUT BARFI 1LB	BX-12	
BLACK SEED COOKIES 200GM	BX-12		DOODH MALAI 1LB	<b>BX-12</b>	
SELECTION COOKIES 350GM	<b>BX-20</b>		GAJAR/CARROT HALWA 1LB (SMALL)	BX-12	
BAQAR KHANI 200GM	BX-24		GAJAR/CARROT HALWA 1LB (SMALL)	BX-12	
BAQAR KHANI ROUND 500GM	BX-20		GULAB JAMUN 1LB (SMALL)	BX-12	
BURGER RUSK 300GM	BX-12		GULAB JAMUN 2 LB (MEDIUM)	BX-16	
BURGER RUSK 500GM	BX-12		HABSHI HALWA 1LB	BX-12	
CAKE RUSK 350GM	BX-12		KALA JAMUN 1LB	BX-12	
CAKE RUSK 700GM	BX-12		KALAKAND CAKE 1LB	BX-12	
COCONUT BITES 250GM	BX-24		KALAKAND SOHNI 1LB	BX-12	
FRENCH PUFF PASTRY 200GM	BX-36		<b>NEW COOKIES</b>		
NAN KHATAI 350 GM	BX-20				
PHENI 200GM	BX-24				
ROUND RUSK 300GM	BX-12				
ROUND RUSK 500GM	BX-12				
SOAN PAPDI 250 GM	BX24				
SOAN PAPDI 500 GM (Large)	BX24				
TEA RUSK 200GM	BX-12				
PURE BUTTER 2 LB	<b>BX-6</b>				
PURE GHEE 2 LB	<b>BX-6</b>				



# GMS INTERNATIONAL FOODS INC.

Phone: 310-848-0577

Fax: 310-868-2922



Description	Case	Qty	Description	Case	Qty
-------------	------	-----	-------------	------	-----

## Sweets (Continued)

LACCHA RABRI 1LB	BX-12		PANJEERI 1LB	BX-12	
LOKI HALWA 1LB	BX-12		PISTA HALWA 1LB (SMALL)	BX-12	
LOKI KALAKAND 1LB	BX-12		RAINBOW KALAKAND 1LB	BX-12	
MAL PURA 500GM	BX-24		RAS GULLAH IN SYRUP 1KG	BX-12	
MALAI KHAJA 1LB	BX-12		RAS MALAI 1KG (LARGE)	BX-16	
MAWA /KHOYA 1LB (SMALL)	BX-12		RAS MALAI 500GM (SMALL)	BX-12	
MOTICHUR LADDU 1LB	BX-12		SUJI HALWA 1LB	BX-12	
PAAN PERA (HEART SHAPE) 1LB	BX-12		URDIA LADDU 1LB	BX-12	
ZAFRANI PEDAY 1LB	BX-12				



### Bulk Sweet for Catering

### Hyderabadi Cakes

CARROT/ GAJAR HALWA 4KG (BULK)	BX-4	
GULAB JAMUN 3KG (BULK)	BX-4	
MAWA /KHOYA 4KG (BULK)	BX-4	
<b>MIX MITHAI (GIFT PACK) 200GM (Masjid)</b>	BX-50	
PISTA HALWA 4KG (BULK)	BX-4	
KALA JAMUN 3KG	BX-4	
MOTICHOR LADDU 2KG	BX-6	
LACCHA RABRI 3KG	BX-4	

Cake Chocolate 850 GM	BX-8	
Cake Coffee 850 GM	BX-8	



## REHMAT-E-SHEREEN

BUN KABAB (VEG) 680GM	BX-12		SAMOSAS PATTI 200GM	BX-24	
PESHAWARI NAAN 2KG	BX-6		PUNJABI SAMOSA 1625GM	BX-6	
PESHAWARI NAAN 1KG	BX-12		PUNJABI SAMOSA 450GM	BX-12	
PARATHA HOMESTYLE 1600GM	BX-6		SHEERMAL 690GM	BX-20	
PLAIN PARATHA JUMBO 2400GM	BX-4		SPRING ROLL PATTI 280GM	BX-12	
CHATPATA SAMOSA 300GM	BX-12		SPRING ROLL VEG 280GM	BX-12	
SAMOSAS COCKTAIL 850GM	BX-12				



Description	Case	Qty	Description	Case	Qty																					
<b>KNN's</b>			<b>TAZA</b>																							
																										
			<table border="1"> <tr><td>TAZA BUN KABAB 480GM</td><td>BX-12</td><td></td></tr> <tr><td>TAZA CHICKEN PATTIES 360GM</td><td>BX-12</td><td></td></tr> <tr><td>TAZA DAAL PURI KACHORI 420 GM</td><td>BX-12</td><td></td></tr> <tr><td>TAZA DAHI WADA 400GM</td><td>BX-12</td><td></td></tr> <tr><td>TAZA KULCHA 480GM</td><td>BX-16</td><td></td></tr> <tr><td>TAZA KULCHA NAAN 450 GM</td><td>BX-18</td><td></td></tr> <tr><td>TAZA PARATHA CHAI HOME 360 GM</td><td>BX-18</td><td></td></tr> </table>			TAZA BUN KABAB 480GM	BX-12		TAZA CHICKEN PATTIES 360GM	BX-12		TAZA DAAL PURI KACHORI 420 GM	BX-12		TAZA DAHI WADA 400GM	BX-12		TAZA KULCHA 480GM	BX-16		TAZA KULCHA NAAN 450 GM	BX-18		TAZA PARATHA CHAI HOME 360 GM	BX-18	
TAZA BUN KABAB 480GM	BX-12																									
TAZA CHICKEN PATTIES 360GM	BX-12																									
TAZA DAAL PURI KACHORI 420 GM	BX-12																									
TAZA DAHI WADA 400GM	BX-12																									
TAZA KULCHA 480GM	BX-16																									
TAZA KULCHA NAAN 450 GM	BX-18																									
TAZA PARATHA CHAI HOME 360 GM	BX-18																									
																										
KNN CHAPLI KABAB Family 18.4oz	BX-8		<b>TAZA PARATHA FAMILY PACK 1600G</b>	<b>BX-6</b>																						
<b>KNN CHICKEN FRANK 11.20 OZ</b>	BX-18		TAZA PARATHA HOME STYLE 450 GM	BX-30																						
KNN CHICKEN JUMBO FRANK 10.5	BX-18		TAZA PARATHA HOME STYLE TAWA 1.6KG	BX-6																						
<b>KNN CHICKEN KOFTA 11 OZ</b>	BX-12		TAZA PARATHA PLAIN 400 GM	BX-24																						
KNN CHICKEN NUGGET Family 20.5	BX-8		TAZA PARATHA W.W FAMILY 1.6K	BX-6																						
KNN CHICKEN PATTIES FAM 19.60	BX-8		TAZA PUFF PASTRY 450 GM	BX-24																						
KNN CHICKEN SEEKH KABAB 8.5 OZ	BX-12		<b>TAZA QANDHARI NAAN</b>	<b>BX-12</b>																						
KNN CHK SEEKH KABAB FAMILY 16	BX-8		TAZA ROTI CHAPATI 450GM	BX-24																						
KNN COMBO WINGS Family 18.4oz	BX-8		TAZA ROTI CHAPATI W.W 450GM	BX-24																						
KNN CROQUETTES FAMILY 18.8	BX-8		TAZA ROTI RUMALI 600GM	BX-24																						
KNN CROQUETTES Regular 10.5	BX-12		TAZA SAMOSA CHATPATA 800 GM	BX-12																						
<b>KNN FUN NUGGET Family 20.40 OZ</b>	BX-8		TAZA SAMOSA COCKTAIL 500 GM	BX-14																						
KNN HARAY NUGGET Fam 11.40 OZ	BX-8		TAZA SAMOSA PAD PASTRY 300 GM	BX-24																						
KNN KAFTA KABAB Regular 8.5 OZ	BX-12		TAZA SAMOSA PUNJABI 2KG	BX-4																						
KNN KOFTA HOMESTYLE 19.90 OZ	BX-8		TAZA SAMOSA VEGETABLE 800 GM	BX-12																						
KNN MORTADELLA 8 OZ	BX-18		TAZA SHEERMAL 660GM	BX-24																						
<b>KNN SEEKH KABAB FAMILY SPICY 16</b>	BX-8		TAZA SPRING ROLL VEGE. 240GM	BX-12																						
KNN SHAMI KABAB Family 20.90oz	BX-8		TAZA TAFTAN 660GM	BX-14																						
KNN TENDER POPS FAMILY 17.3 OZ	BX-8																									
<b>FROZEN MEDITERRANEAN</b>			TAZA TANDOORI NAAN 450GM	BX-18																						
MID EAST DOUGH SQUIRE 12 X 9'S	12 PKG		<b>TAZA TANDOORI NAAN FAMILY 1KG</b>	<b>BX-12</b>																						
MID EAST OKRA FROZEN	20 PKG		TAZA TANDOORI ROTI 450GM	BX-24																						
MID EAST MALOUKHIA FROZEN	20 PKG																									



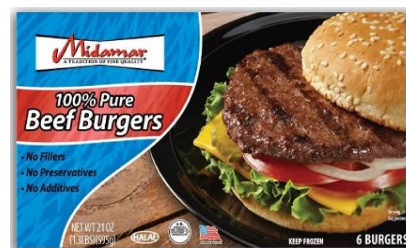
# GMS INTERNATIONAL FOODS INC.

Phone: 310-848-0577

Fax: 310-868-2922



Description	Case	Qty	Description	Case	Qty
-------------	------	-----	-------------	------	-----




BEEF FRANKS 12 OZ	BX-12		BEEF SEASONED PATTIES 24 OZ	BX-8	
B/FASTSAUSAGE LINK 8 OZ	BX-16		CAMPFIRE BEEF FR. 12 OZ JUMBO	BX-12	
B/FAST BEEF SLICE (3X5 LB)	BX-15		BEEF SAUSAGE TOPPING (2X5 LB)	BX-10	
B/FAST BEEF SLICE HICKORY 12OZ	BX-12		CHICKEN BOLOGNA SLICE 4 OZ	BX-20	
BEEF STRIPS GR. FORMED 12OZ	BX-12		CHICKEN FRANKS 12 OZ	BX-12	
BEEF FRANKS JUMBO 12 OZ	BX-12		CHICKEN FRANKS JUMBO 12 OZ	BX-12	
BEEF GYRO CONE SLICE 20 LB	BX-2		CHICKEN NUGGETS 18 OZ	BX-12	
BEEF GYRO SHAWARMA SLICE 1 LB	BX-10		CHICKEN PATTIES 18 OZ	BX-12	
BEEF HOT LINK JUMBO 12 OZ	BX-12		CHICKEN TENDER 18 OZ	BX-12	
BEEF PATTIES 21 OZ	BX-8		TURKEY STRIP BACON 12 OZ	BX-12	
BEEF PEPPERONI SLICED ( 2X5 LB)	BX-10		TURKEY FRANKS 12 OZ	BX-12	
BEEF PASTRAMI ROUND SLICES 8 OZ	BX-12		CHICKEN BREAST TENDER 5 LB	BX-2	
BEEF ROAST SLICES 8 OZ	BX-12		SMOKED TURKEY BR. 2X9 LB	BX-18	



Description	Case	Qty	Description	Case	Qty
<b>MASHAL PRE-PACK SPICES</b>					
					
AJWAIN POWDER 200 GM (16-1633)	BX-15		CHINESE SALT 14 OZ (400GM) (16-2005)	BX-15	
AJWAIN SEEDS 100 G	BX-20		CHINESE SALT 7 OZ (200GM) (15-7292)	BX-15	
AJWAIN SEEDS 200 GM (15-7414)	BX-15		CINNAMON FLAT 100 GM (15-7834)	BX-15	
AMCHUR (MANGO) POWDER 200 GRM	BX-15		CINNAMON FLAT 7 OZ (200 GM) (15-9319)	BX-15	
AMCHUR SLICE 3.5 OZ (100 GM) (15-7452)	BX-15		CINNAMON POWDER 4 OZ	BX-30	
ANISE STAR 14 OZ (400GM) (16-1886)	BX-12		CINNAMON ROUND 2 OZ	BX-15	
ANISE STAR 4 OZ (115GM) (15-7513)	BX-15		CINNAMON ROUND 3.5 OZ (100 gm)	BX-15	
ANISE STAR 7 OZ (200GM) (16-1862)	BX-15		CINNAMON ROUND 7 OZ (200 gm)	BX-15	
BAY LEAVES 20G	BX-20		CITRIC ACID 7 OZ (200GM) (15-7858)	BX-15	
BLACK CARDAMOM 2 OZ (57 GM) (16-1213)	BX-15		CLOVE WHOLE 115 GM (15-7872)	BX-20	
BLACK CARDAMOM 200 GM (15-7575)	BX-15		CLOVE WHOLE 7OZ (200 GM) (15-7896)	BX-15	
BLACK CARDAMOM 3.5 OZ (100 GM)	BX-15		COCONUT POWDER 7 OZ (200 GM)	BX-15	
BLACK CARDAMOM 4 OZ (115 GM)	BX-15		COCONUT SHERADED 7 OZ (200GM)	BX-15	
BLACK PEPPER POWDER 7 OZ	BX-15		COCONUT SLICED 7 OZ	BX-15	
BLACK PEPPER WHOLE 4 OZ	BX-15		CORIANDER POWDER 200 GM (15-7971)	BX-15	
BLACK PEPPER WHOLE 7 OZ	BX-15		CORIANDER POWDER 400GM (15-7957)	BX-12	
BLACK SALT POWDER 7 OZ (200GM)	BX-15		CORIANDER POWDER 800 GM	BX-6	
CARDAMOM GREEN 2 OZ (57 GM)	BX-15		CORIANDER ROASTED / CRUSHED 7OZ (200G)	BX-15	
CARDAMOM GREEN 4oz (115 GM)	BX-15		CORRIANDER SEED 200 GM (15-8015)	BX-15	
CARDAMOM GREEN 7 OZ (200 GM)	BX-15		CORRIANDER SEED 400GM	BX-12	
CARDAMOM SEED 4oz	BX-15		CORRIANDER SEED 800 GM	BX-6	
CHAR GOND 7 OZ (200GM) (16-0193)	BX-15		CUMIN CORIANDER POWDER 200 GM (Dhana)	BX-15	
CHILI POWDER EX-HOT 28 OZ (800 GM)	BX-6		CUMIN POWDER 14 OZ (400 GM)	BX-12	
CHILI POWDER KASHMIRI 14 OZ (400GM)	BX-12		CUMIN POWDER 28OZ (800 GM)	BX-6	
CHILI POWDER KASHMIRI 28 OZ (800GM)	BX-6		CUMIN POWDER 7 OZ (200 GM)	BX-15	
CHILI POWDER KASHMIRI 7 OZ (200 GM)	BX-15		CUMIN ROASTED / CRUSHED 7OZ (200GM)	BX-15	
CHILI POWDER MILD 14 OZ (400 GM)	BX-12		CUMIN SEED WHOLE 200 G	BX-15	
CHILI POWDER MILD 7 OZ (200 GM)	BX-15		CUMIN SEED WHOLE 400GM	BX-12	
CHILI RESHAM PATTI PWDR 200 GM	BX-15		CUMIN SEED WHOLE 800GM (28 OZ)	BX-6	
CHILLI CRUSH/ SAUSAGE 7 OZ (200GM)	BX-15		CUMIN/CORIANDER PWDR 14 OZ(400GM)	BX-12	
CHILLI CRUSHED 14 OZ (400GM)	BX-12		CURRY POWDER HOT 200 G	BX-15	
CHILLI CRUSHED 7 OZ (200GM)	BX-15		CURRY POWDER MADRAS 200gm	BX-15	
CHILLI POWDER 7 OZ (200 GM) (16-2296)	BX-15		CURRY POWDER MILD 200 G	BX-15	
CHILI POWDER DEGI 14 OZ (400GM)	BX-12		DALIA SPLIT 7 OZ (200 GM) (16-1732)	BX-15	
CHILI POWDER DEGI 7 OZ (200 GM)	BX-15		DHANA DAL 7 OZ (200 GM) (16-1190)	BX-15	
CHILLI POWDER EX-HOT 7 OZ (200 GM)	BX-15		DILL SEEDS 7 OZ (200GM) (16-1589)	BX-15	
CHILLI POWER EX-HOT 14 OZ (400 GM)	BX-12		EDIBLE GUM 7 OZ (200 GM) (15-8374)	BX-15	



Description	Case	Qty	Description	Case	Qty
<b>MASHAL PRE-PACK SPICES</b>					
			TURMERIC POWDER 200GM (15-8879)	BX-15	
			TURMERIC POWDER 400GM (15-8855)	BX-12	
			TUKMARIA (BASIL SEED) 7 OZ (200GM) (16-0111)	BX-15	
			WHITE PEPPER POWDER 7 OZ 200GM (16-2456)	BX-15	
FENNEL POWDER 200gm	BX-15				
FENNEL SEEDS 400gm	BX-12				
FENNEL SEEDS 7 OZ (200gm) (15-8213)	BX-15				
FENNEL SEEDS LAKHNAWI 14 OZ (400gm) (16-136)	BX-12				
FENNEL SEEDS LAKHNAWI 7 OZ (200gm) (16-0537)	BX-15				
FENUGREEK POWDER 400gm	BX-12				
FENUGREEK POWDER 7OZ (200GM) (15-8275)	BX-15				
FENUGREEK SEED 14 OZ (400GM) (15-8251)	BX-12				
FENUGREEK SEEDS 200GM (METHI) (15-8237)	BX-15				
GARAM MASALA 100gm	BX-30		<b>JAGERRY AND SUGAR</b>		
GARAM MASALA WHOLE 14 OZ (400 GM)	BX-12		JAGGERY KOHLAPURI JAR 1KG (15-9272)	BX-12	
GARAM MASALA WHOLE 3.5 OZ (100 GM) (15-831)	BX-15		JAGGERY POWDER JAR 1KG (INDIAN)	BX-12	
GARAM MASALA WHOLE 7 OZ (200 GM)	BX-15		JAGGERY POWDER JAR 1KG (PAKISTAN)	BX-12	
GARLIC POWDER 7 OZ ( 200 GM ) (15-8336)	BX-15		PUNJABI GUR NATURAL 1KG	BX-12	
GINGER POWDER 14OZ (400gm)	BX-12		SUGAR INDIAN 2.2 LB (1 KG) (16-2616)	BX-12	
GINGER POWDER 7OZ (200gm) (15-8350)	BX-15		WHITE MISRI 200GM (7OZ) (16-0674)	BX-15	
GOND KATIRA 3.5 OZ (100GM) (16-0216)	BX-15		<b>MASHAL HERBAL</b>		
GREEN CHILI POWDER 7 OZ (200GM) (16-1671)	BX-15		AMLA POWDER 200GM (GOOSEBERRY)	BX-15	
GUM SUDANI 7 OZ (200 GM) (16-0230)	BX-15		CURRY LEAVES 2 OZ (15-9845)	BX-15	
JAVETRY (MACE) POWDER 2 OZ (57 GM)	BX-15		JAMUN POWDER 7 OZ (200GM)	BX-15	
JAVETRY (MACE) POWDER 3.5 OZ (100GM)	BX-15		LEMON GRASS POW. 2 OZ (57 GM ) JAR	BX-15	
JAVETRY (MACE) WHOLE 2 OZ (57 GM)	BX-15		MINT CUT 2 OZ (57 GM)	BX-15	
JAVETRY (MACE) WHOLE 4 OZ (115GM) (15-8473)	BX-15		MINT WHOLE 2 OZ (57 GM)	BX-15	
KABAB CHINI 100GM (15-9463)	BX-15		MULAITHI POWDER 7 OZ (200 GM)	BX-15	
KACHRI POWDER 7 OZ (16-1657)	BX-15		MULAITHI WHOLE 4 OZ (115GM)	BX-15	
KALA NAMAK 14 OZ	BX-12		MULAITHI WHOLE 7 OZ (200 GM)	BX-15	
KALONJI SEED 7 OZ (200GM) (15-8510)	BX-15		MULTANI MATTI 7 OZ (200 GM)	BX-15	
LAHORI SALT (NAMAK) 14oz	BX-12		NEEM POWDER 7 OZ (200 GM)	BX-15	
MUSTARD POWDER 7 OZ (200GM) (15-8596)	BX-15		SAT ISABGOL 130 GM (16-1121)	BX-12	
MUSTARD SEED BLACK"" 14 OZ (400 GM)""	BX-12		SHIKAKAI POWDER 7 OZ (16-1923)	BX-15	
MUSTARD SEED BLACK"" 7 OZ (200 GM)""	BX-15				
MUSTARD SEED YELLOW"" 7 OZ (200GM)""	BX-15				
MUSTARD SPLIT (KURYA) 7 OZ (200 GM) (16-0254)	BX-15				
NUTMEG ( JAIFAL) POWDER 2 OZ	BX-15				
NUTMEG WHOLE W/O SHELL 2 OZ (57 GM) (15-86)	BX-15				
PANCH PHORON 7 OZ (200 GM) (15-8657)	BX-15				
PAPRIKA 7 OZ	BX-15				
PHITCURY (ALUM) 400G	BX-12				
POPPY SEEDS 3.5 OZ (100 GM) (15-9425)	BX-15				
POPPY SEEDS 7 OZ (200 GM)	BX-15		<b>DESSERTS CONDIMENTS</b>		
PUNJABI PICKLE MASALA 400 GRM	BX-12		ASHRAFI FOR ZARDA 250GM (8 OZ)	BX-15	
PUNJABI PICKLE MIX 7OZ (200GM) (16-0551)	BX-15		FALOODA MIX 200 GM "MANGO"	BX-12	
SESAME SEED ""BLACK"" 7 oz (200 GM)	BX-15		FALOODA MIX 200 GM "PISTACHIO"	BX-12	
SESAME SEED NATURAL"" 7 oz (200 GM)""	BX-15		FALOODA MIX 200 GM "ROSE"	BX-12	
SESAME SEED ROASTED" 7 OZ (200GM)"(16-2593)	BX-15		FALOODA SEV WHITE 50GM (16-0131)	BX-30	
SESAME SEED WHITE"" 7 OZ (200GM)""	BX-15		FALOODA SEV YELLOW 50 GM (16-0131)	BX-30	
SHAH ZEERA 100 GM (15-7353)	BX-15		JELLY PLAIN 7 OZ (HALAL / VEGE) 7 OZ	BX-15	
SHAH ZEERA 200 GM (7 OZ) (KALA ZEERA)	BX-15		TUTTI FRUITI MIX 200 GM (16-0759)	BX-24	

Description	Case	Qty	Description	Case	Qty
<b>MASHAL CEREALS</b>					
ALSI (FLEX) POWDER 14 OZ (400GM) (16-00)	BX-12				
ALSI (FLEX) POWDER 2 LB	BX-12				
ALSI (FLEX) SEEDS 400GM	BX-12				
BARLEY PEARL 24 OZ	BX-12				
MUMRA 400 GM (PUFFED RICE)	BX-12				
POHA MEDIUM 2 LB (15-8718)	BX-12				
SABUDANA (SAGO) 14 OZ (400 GM) (16-01)	BX-12				
SOYA CHUNK 14 OZ (400GM) (16-1381)	BX-12				
SOYA GRANULE 400GM (16-2227)	BX-12				
WHEAT CRUSHED "LAPSI" 24 OZ (700GM) (16-1381)	BX-24				
WHEAT PELTED 24 OZ	BX-12				

**MASHAL SNACKS**

REWDI CHAKWAL (GUR) 400GM	BX-20		FRYUMS ABCD 400 GM (16-0926)	BX-12	
PHOOL MAKHANA 3.5 OZ (100GM) (16-0179)	BX-15		FRYUMS JALI 400 GM (16-0926)	BX-12	
REVADI "SUGAR" 7 OZ (200 GM) (15-8770)	BX-15		FRYUMS STAR 400 GM	BX-12	
REWDI "GUD" 7 OZ (200 GM) (15-8756)	BX-15		FRYUMS OKRA 400 GM	BX-12	
REWDI GUD"" 14 OZ (400 GM)""	BX-12		FRYUMS PIPE 400 GM	BX-12	
ROASTED CHANA (SKIN LESS) 14 OZ (400 GM)	BX-12		FRYUMS WHEEL 400 GM	BX-12	
ROASTED GRAM SKINLESS 2 LB "JAR" (16-109)	BX-6		PANI PURI 180 GM WITH PANI PURI MASALA	BX-12	
SWEET MAKHANA 14 OZ (400GM) (16-0674)	BX-12		MAHABALESHWAR CHANA 14 OZ (400 GM) (15-7674)	BX-12	
SWEET MAKHANA SMALL 7OZ	BX-15		MAHABALESHWAR CHANA 2LB "JAR" (16-1077)	BX-6	
MOONG DAL WADI 14 OZ (400GM)(16-1459)	BX-12				

**MASHAL DRY FRUITS**

ALUBUKHARA GOLDEN 14 OZ	BX-12	
ALUBUKHARA GOLDEN 7 OZ (15-7247)	BX-15	
APRICOT DRY 7 OZ (200 GM) (15-7261)	BX-15	
DRIED PLUM (Alubukhara Black) 7 OZ	BX-15	



**MASHAL FLOUR**

MASHAL SHARBATI FLOUR 20LB	MBG-2	
----------------------------	-------	--





Description	Case	Qty	Description	Case	Qty
<b>MASHAL FOOD COLORS (FDA Certified)</b>			<b>MASHAL OIL</b>		
			MASHAL KALONJI OIL 30 ML	12	BTLS
			MASHAL SESAME OIL 500 ML	20	BTLS
			MASHAL VIRGIN COCONUT OIL 500 ML	24	JARS
			MASHAL CASTOR OIL 250 ML	12	BTLS
			MASHAL CASTOR OIL 500 ML	12	BTLS
GREEN 25 GM	DOZEN		<b>MASHAL FLEXSEED OIL 250 ML</b>	12	BTLS
ORANGE 25 GM	DOZEN		<b>MASHAL PEANUT OIL 500ML</b>	20	BTLS
RED 25 GM	DOZEN		MASHAL SESAME OIL 1 LITER	10	BTLS
YELLOW 25 GM	DOZEN				
<b>MASHAL FALOODA DRINKS</b>					
Falooda Drink Almond 290 ML	BX-24				
Falooda Drink Mango 290 ML	BX-24				
Falooda Drink Pistachio 290 ML	BX-24				
Falooda Drink Rose 290 ML	BX-24				
Falooda Drink Strawberry 290 ML	BX-24				
Falooda Drink Vanilla 290 ML	BX-24		LAZIZA APPLE MALT 280ML (NO-ALCOHOL)	24	BTLS
			LAZIZA BEER 280ML (NO-ALCOHOL)	24	BTLS
			LAZIZA RASP. MALT 280ML (NO-ALCOHOL)	24	BTLS
			LAZIZA PEACH MALT 280ML (NO-ALCOHOL)	24	BTLS
			LAZIZA POME. MALT 280ML (NO-ALCOHOL)	24	BTLS
			LAZIZA STRAW. MALT 280ML (NO-ALCOHOL)	24	BTLS
			<b>LAYS AND KURKURE</b>		
			LAY'S MASALA CHIPS TOMATO 52GM	64	PKG
			LAY'S MASALA CHIPS MAGIC 52GM	64	PKG
			UNCLE CHIPS 55 GM	48	PKG
<b>MASHAL CONDIMENTS</b>			<b>CHIKKI / LADDU</b>		
CHAROLI 3.5 OZ (100 GM) (16-0988)	BX-15		<b>CHARLIE CHIKKI PEANUT 100 GM</b>	20	PKG
CHIA SEED 7OZ (200 GM) (16-2098)	BX-15		<b>CHARLIE CHIKKI SESAME 100 GM</b>	20	PKG
CORN STARCH 300 GRM	BX-36		CHARLIE LADDU PEANUT 200GM	20	PKG
SOYA SAUCE 340 ML "HALAL/VEGE"	BX-12		CHARLIE LADDU SESAME 200GM	20	PKG
SYNTHETIC VINEGAR 1 LTR	BX-12				
CHANDI WARAK 10GM (NON-EDIBLE)	BX-12				
			<b>MASHAL JAR SPICES</b>		
AJWAIN POWDER "JAR" 2 OZ (57GM)	BX-12		CLOVE POWDER 2 OZ (57 GM) (16-0414)	BX-12	
ANARDANA POWDER "JAR" 100 GM	BX-12		GARAM MASALA POWDER JAR 75gm	BX-12	
ANISE STAR POWDER 2 OZ (57GM)	BX-12		GARLIC MINCED JAR 250GM (16-1848)	BX-12	
BAKING (MEETHA) SODA 100 GM	BX-12		GREEN CHILI CRUSHED 5 OZ (142 GM)	BX-12	
BAKING POWDER 50 GM (16-0650)	BX-12		KACHRI POWER JAR 3.5 OZ (100GM)	BX-12	
CARDAMOM GREEN 2 OZ JAR (57 GM)	BX-12		NUTMEG POWDER 2 OZ "JAR" (57 GM)	BX-12	
CARDAMOM POWDER JAR 2 OZ (57GM) (15-92)	BX-12		PANCH PORAN POW JAR 250GM (16-1794)	BX-12	
CARDAMOM SEED JAR 2 OZ (57GM)	BX-12		PINK SALT JAR 4 LB	BX-12	
CHIA SEED "JAR" 125 GM (16-2074)	BX-12		RAJMA MASALA JAR 100 GM (16-2432)	BX-12	
CHICKEN TANDOORI JAR 75GM (16-1718)	BX-12		TEA MASALA 1JAR 00 GM (16-2470)	BX-12	
CINNAMON POWDER "JAR" 2 OZ (57 GM) (15-)	BX-12		WHITE PEPPER WHOLE "JAR" 100GM	BX-12	
CLOVE POWDER 2 OZ (57 GM) (16-0414)	BX-12		YEAST POWDER 50 GM (16-0612)	BX-12	

TWI CRISPY

Description	Case	Qty	Description	Case	Qty
					



**BAKERY PRODUCTS**

BAQAR KHANI 340 GM	14 BOX		TEA RUSK 200GM	21 PKG	
CAKE RUSK 650 GM	14 BOX		TEA RUSK ROUND 200GM	21 PKG	
CAKE RUSK ALMOND 750 GM	14 BOX		TEA RUSK W. WHEAT 200GM	21 PKG	
CAKE RUSK EGGLESS 750 GM	14 BOX				
CAKE RUSK SUGAR FREE 750 GM	14 BOX				
TWI FRUIT CAKE REGULAR 380gm	14 BOX				
TWI FRUIT CAKE EGGLESS 380gm	12 BOX				


**CRISPY FRESH ROTI**

TWI ROTI BESAN / MISSI 400GM	10 PKG		TWI ROTI WHITE REGULAR 10'S	10 PKG	
TWI ROTI GUJRATI 350GM	10 PKG		TWI ROTI WHOLE WHEAT 10'S	10 PKG	
TWI ROTI METHI 400GM	10 PKG		TWI RUMALI ROTI REG 21 OZ	10 PKG	
TWI ROTI PURI 400GM	10 PKG		TWI RUMALI ROTI W.W. 21 OZ	10 PKG	



**PASTES**

**FRIED ONION**

CHILI PASTE 750 GM		BX-12		ONION FRIED 400 GM		BX-24
GARLIC PASTE 330 GM		BX-12				
GARLIC PASTE 750 GM		BX-12				
GINGER/GARLIC PASTE 330G		BX-12				
GINGER/GARLIC PASTE 750G		BX-12				
GINGER PASTE 330 GM		BX-12				
GINGER PASTE 750 GM		BX-12				
PAPAYA PASTE 330 GM		BX-12				
PAPAYA PASTE 750 GM		BX-12				
PAPRIKA PASTE 330 GM		BX-12				



Description	Case	Qty	Description	Case	Qty
<b>KITCHEN UTENSILS</b>					
<b>SONEX POT</b>					
			ALUMINIUM KADAI (JSM 9")	5 PCS	OUT
			ALUMINIUM KADAI / LID (PUJA # 5)	5 PCS	OUT
			MARBLE PATLA 11"	1 PCS	OUT
			MARBLE HAVAN DASTA 6"	1 SET	OUT
			IRON SKEWER FOR KABAB 24"	1 PCS	OUT
			IRON SKEWER FOR BOTI 24"	1 PCS	OUT
			PLASTIC LOTA (PICHER)	DOZEN	OUT
			BBQ SKEWERS 9/16	3 PCS SET	OUT
			BBQ SKEWERS 15/16	3 PCS SET	OUT
SONEX POTS SIZE 1-6 SET	6 PCS	OUT	<b>SPORTING GOODS</b>		
SONEX POTS SIZE 7-9 SET	3 PCS	OUT		UNIT	
SONEX POT SIZE # 10	1 PCS	OUT		UNIT	
SONEX POT SIZE # 11	1 PCS	OUT		UNIT	
SONEX POT SIZE # 12	1 PCS	OUT		UNIT	
SONEX POT SIZE # 13	1 PCS	OUT		UNIT	
SONEX POT SIZE # 14	1PCS	OUT	<b>CA HARD BALL 4.5 OZ - 5 OZ WHITE / RED</b>	6 PACK	
SONEX PRESURE COOKER 7 LITER	1 PCS	OUT	<b>BEAUTY SOAP</b>		
SONEX TAWA NON-STICK	5 PCS	OUT	ARITHA SOAP	DOZEN	
	1 PCS	OUT	CHANDRIKA SOAP	DOZEN	
SONEX NON-STICK ALUMINUM WOK 30CM	1 PCS	OUT	DETTOL SOAP 125GM	DOZEN	
SONEX NON-STICK ALUMINUM WOK 32CM	1 PCS	OUT	DETTOL SOAP 125GM BLUE	DOZEN	
SONEX NON-STICK ALUMINUM WOK 36CM	1 PCS	OUT	DETTOL SOAP 125GM PINK	DOZEN	
			LIFE BUOY SOAP 115 GRM	DOZEN	
			LUX SOAP 115GM	DOZEN	
<b>OTHER UTENSILS</b>			LUX SOAP 90 GM	DOZEN	
PATLA BELAN PUNJABI SET	10 SETS	OUT	LUX SOAP GREEN 125GM	DOZEN	
PATLA BELAN GUJRATI SET	10 SETS	OUT	LUX SOAP WHITE 125GM	DOZEN	
STAINLESS STEEL HOT POT 2500	UNIT	OUT	MARGO NEEM SOAP 75 GM	DOZEN	
STAINLESS STEEL HOT POT 3000	UNIT	OUT	MARGO NIRMAL ARITHA 75 GM	DOZEN	
STAINLESS STEEL HOT POT 3500	UNIT	OUT	MOTI SOAP ROSE 150 GM	DOZEN	
STAINLESS STEEL HOT POT 4000	UNIT	OUT	MOTI SOAP SANDAL 150 GM	DOZEN	
STAINLESS STEEL HOT POT HANDI 3000	UNIT	OUT	MYSORE SANDALWOOD SOAP 125GM	DOZEN	
STAINLESS STEEL HOT POT HANDI 4000	UNIT	OUT	MYSORE SANDALWOOD SOAP 75 GM	DOZEN	
STAINLESS STEEL IDLI COOKER 12 PCS	UNIT	OUT	NEEM SOAP	DOZEN	
CLAY HANDI	UNIT	OUT	PEAR SOAP 75G	DOZEN	
			SIKAKI SOAP	DOZEN	

Description	Case	Qty	Description	Case	Qty	
<b>MEDITRANEAN GROCERY</b>						
ATHENA DOLAMA 14 OZ	12 CAN					
ATHENA DOLAMA 70 OZ	6 CAN		MID EAST CUCUMBER PICKLE 19 OZ	12 CANS		
			MID EAST FAVA BEANS 15 OZ	24 CANS		
			MORTAN SALT 28 OZ	24 CAN		
			OETKER BAKING POWDER 0.50 OZ	24 PACK		
			OETKER CREAM BRULEE	10 PACK		
			OETKER PUDDING CHOCO.	10 PACK		
			OETKER YEAST 0.50 OZ	24 PACK		
BYBLOS LEMON JUICE 32 OZ	12 BTLS		  			
CORTAS EGGPLANT DIP 13 OZ	24 CAN					
CORTAS EGGPLANT DIP 30 OZ	24 CAN					
CORTAS HUMMOS DIP 13 OZ	24 CAN					
CORTAS HALWA PISTACHEO 1 LB	12 JARS					
			ROOH AFAZA PAKISTAN	12 BTLS		
				TAMARIND SEEDLESS 14 OZ	50 PKTS	
				TUKAS TOMATO PASTE 25 OZ	12 BTLS	
				TURKISH DRY FIGS 400 GM	24 PKTS	
<b>MISC.</b>						
CORTAS ORANGE BLOSSOM WATER 10 OZ	24 BTLS		VOILA BIRYANI 20 ML	10 BTLS		
CORTAS POMEGRANATE MOLLASES 10 OZ	24 BTLS		VOILA CARDAMOM 20 ML	10 BTLS		
CORTAS ROSE WATER 10 OZ	24 BTLS		VOILA KEWRA 20 ML	10 BTLS		
			VOILA ROSE 20 ML	10 BTLS		
			VOILA VANILLA 20 ML	10 BTLS		
MID EAST KIDNEY BEANS DARK 15 OZ	24 CAN		L.G HING 100 GM	10 BTLS		
MID EAST BARLEY PEARL 24 OZ	24 PACK		L.G HING 50 GM	20 BTLS		
MID EAST GARBANZO BEANS 15 OZ	24 CAN		TELEPHONE ISABGOL 100 GM	20 PKTS		
MID EAST GARBANZO BEANS 28 OZ	12 CAN		TELEPHONE ISABGOL 200 GM	10 PKTS		
MID EAST GARBANZO # 10	6 CAN					
 						
	MID EAST TAHINI 1 LB	12 BTLS				
MID EAST TAHINI 2 LB	12 BTLS					
<b>BISCUITS</b>						
ULKER TEA BISCUITS 14 OZ	10 PKG		 			
ULKER TEA BISCUITS 6 OZ	16 PKG					
ULKER TEA BISCUITS 35 OZ	5 PKG					
SIRO DIGESTIVE COOKIES 400 GM	20 PKG					



Description	Case	Qty	Description	Case	Qty	
<b>SADAF FOODS</b>						
ADVIEH POLO RICE 2 OZ	12 PKG					
ADVIEH BAHARAT 2 OZ	12 PKG					
ANISE SEED GROUND 4 OZ	12 PKG					
ANISE SEED 6 OZ NEW	12 PKG					
BARLEY PEARL 24 OZ	24 PKG					
BAY LEAVES LAUREL 0.5oz	24 PKG					
BLACK PEPPER POWDER 4 OZ (FINE)	12 PKG					
BLACK PEPPER WHOLE 1.5OZ	12 PKG					
BLACK PEPPER TABLE 4 OZ	12 PKG			OREGANO LEAVES CUT 2 OZ	12 PKG	
BREAD CRUMBS 16oz	12 PKG			PAPRIKA 2 OZ	24 PKG	
CARDAMOM GREEN 0.75 OZ	12 PKG		SABZI GORMEH 2 OZ CAN	24 PKG		
CARDAMOM GROUND 0.75OZ	12 PKG		SAFFLOWER SPAN W 0.5OZ	12 PKG		
CARWI SEED BLACK 4oz	12 PKG		SESAME SEED BLACK 3 OZ	12 PKG		
CAYENNE PEPPER 1oz	12 PKG		SESAME ROASTED 6 OZ	12 PKG		
			SESAME SEED 6 OZ	12 PKG		
			SEVEN SPICE BAHARAT 2 OZ	12 PKG		
			SHAWARMA SEASONING 4 OZ	12 PKG		
			SHISH KABOB SEASNG 1OZ	12 PKG		
			SUMAC PURE 4oz	12 PKG		
			THYME 1oz	12 PKG		
CHICKEN KABOB SEASON 1 OZ	24 PKG		TURMARIC POWDER 6 oz	12 PKG		
CHILI PEPPER 1OZ	12 PKG		WHEAT PELTED 24oz	24 PKG		
CILANTRO LEAVE 1.5oz	12 PKG		WHEAT STARCH 12OZ	12 PKG		
CINNAMOM POWDER 3oz	12 PKG		WHEAT UNPELTED 12 OZ	24 PKG		
CINNAMON CUT MED 1.5 OZ	12 PKG		ZAATAR GREEN 6 OZ	12 PKG		
CITRIC ACID 2 oz	12 PKG					
WHOLE CLOVES 0.75 OZ	12 PKG					
CLOVES GROUND 1.5 OZ	12 PKG					
CORRIANDER SEED 4oz	12 PKG					
CORRIANDER GROUND 4 OZ	12 PKG					
CUMIN GROUND 4oz	12 PKG					
CUMIN SEED 4oz	12 PKG					
CURRY POW HOT 4 OZ	12 PKG					
DILLWEED 4 OZ	12 PKG			COUSCOUS ORIGINAL	12 PKG	
ESPARZEH PSYLLIUM 2OZ	12 PKG			FALAFIL MIX 12 OZ	12 PKG	
ESPHAND 4oz	12 PKG		GRAPSEED OIL 1 LIT	12 BTLS		
FENNEL SEED 6 oz	12 PKG		OIL OLIVE X VIR 1LT	12 BTLS		
FENNUGREEK LEAVES 2oz	12 PKG		OLIVE OIL X.VIR ITALY 3 LIT	6 BTLS		
GARLIC GRANULATED 4oz	12 PKG		SALT IODIDZ 26OZ	24 PKG		
HIBISCOUS/SOUR TEA 4OZ	8 PKG		SALT PLAIN 26oz	24 PKG		
LEMON OMANI GROUND 4oz	12 PKG		TABOULY 12 OZ	12 PKG		
LEMON OMANI WHOLE 3OZ SM	20 PKG					
GROUND MEAT KABOB 1 OZ	24 PKG					
MIDITER. SEASONING 1 OZ	12 PKG					
MINT LEAVES CUT 3 OZ	12 PKG					
MINT LEAVES WHOLE 2 OZ	12 PKG					
NUTMEG GROUND 1.5oz	12 PKG					
NUTMEG WHOLE 0.75 oz	12 PKG					